



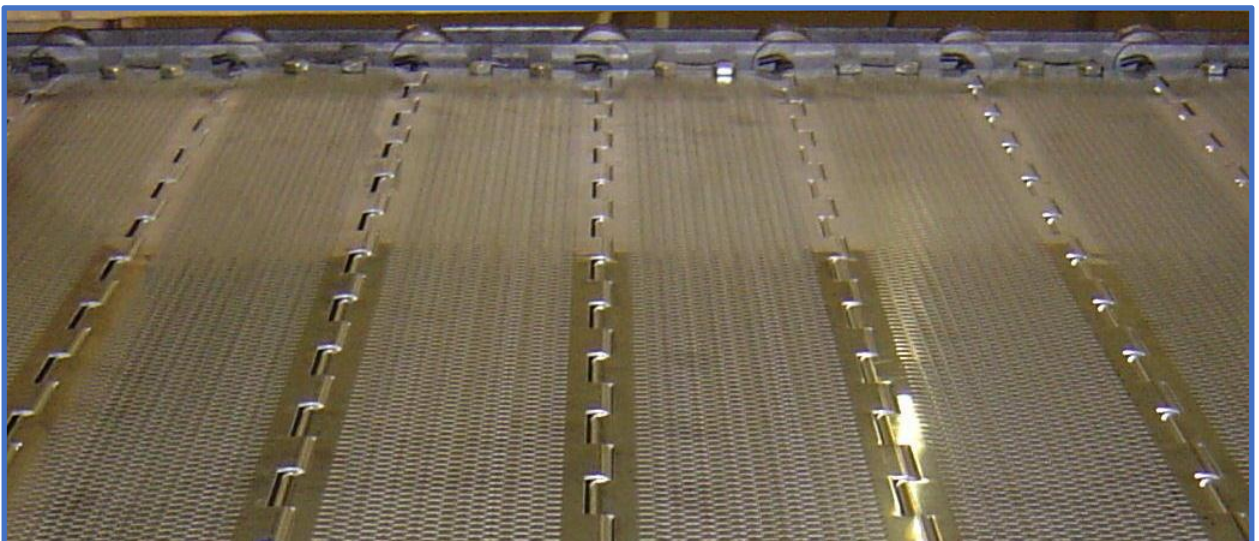
Cresco provides slats (also commonly called flights, pans, bed plates, and aprons) for all major styles and manufacturers of conveyor dryers.

We manufacture a variety of hinge styles, perforation patterns, finishes, and sheetmetal thicknesses.

Based on a sample slat, Cresco can provide virtually any slat to meet our customers' needs.

Features:

- Slat top thickness: 14 to 20 ga
- Girt thickness: ¼" to 20 ga
- Materials: Stainless or mild steel
- Hinge styles: Hinge wires, ball and socket, tented, overlapping
- Girts: Integral or welded
- Finishes: PTFE coatings, electropolishing, other

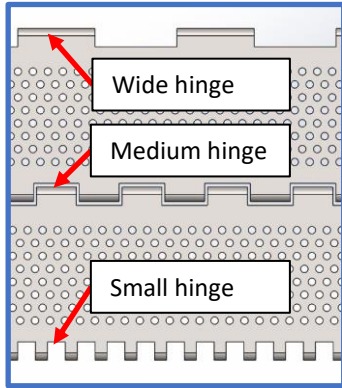
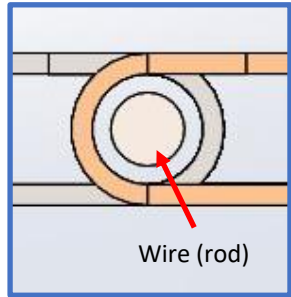




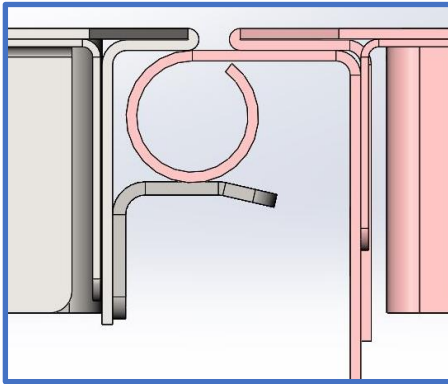
Conveyor Slats

Hinge styles

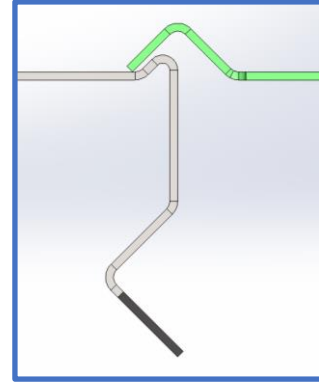
Hinge wire (most common)



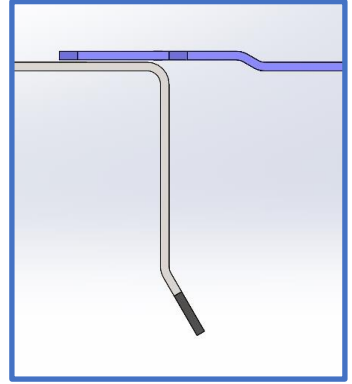
Ball and Socket



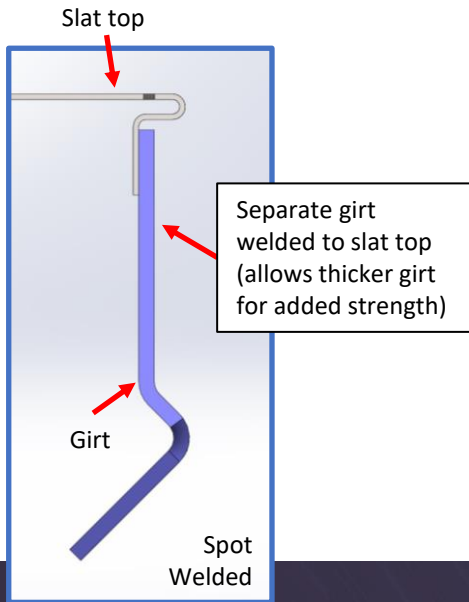
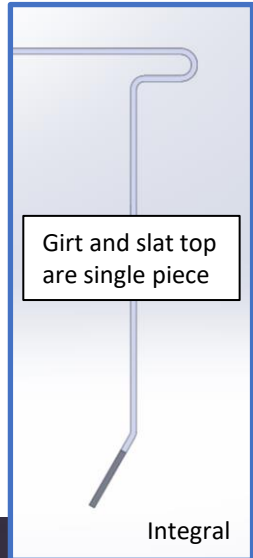
Tented



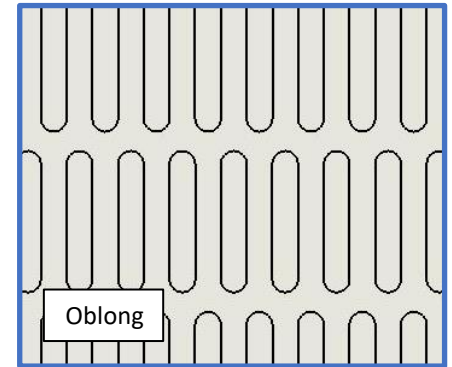
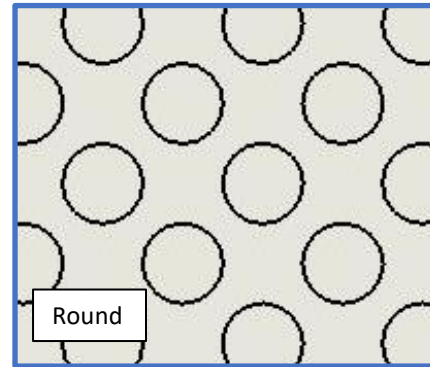
Overlapping



Girt styles



Perforation patterns



Many sizes & patterns are available